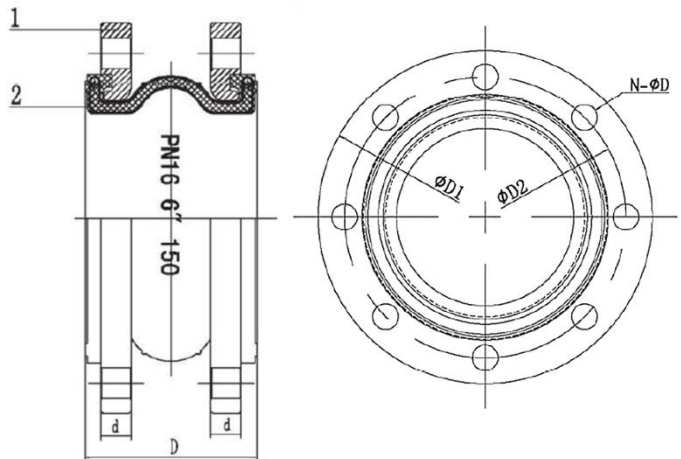
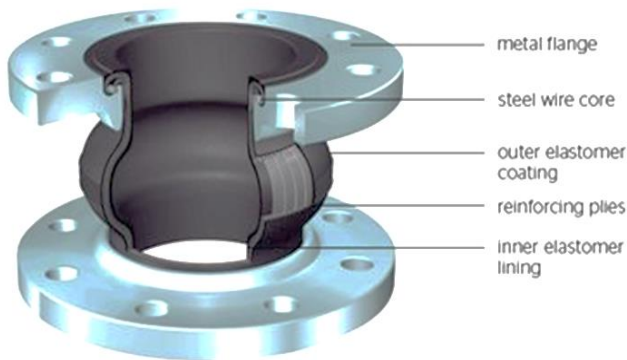


Rubber Bellow (Expansion Joint)

- Due to its good integral function, a flexible rubber joint is widely used in several industries
- It eliminates vibration in the line which alleviates stress on the system
- Small volume, light weight , good flexibility , easy to install and low in maintenance
- Dampens noise, helps to equalize inaccuracies during assembly



Material List		
No	Part Name	Material
1	Flange	WCB Q235-A
2	Sphere	Reinforced EPDM

DN	D1	D2	N-D	D	d	Axial Displacement		Horizontal displacement (mm)	Deflection angle	Mass (Kg)
						Extension	Compression			
50	165	125	4-18	105	20	7	10	10	15°	5.50
65	185	145	4-18	115	20	7	13	11	15°	6.70
80	200	160	8-18	135	22	8	15	12	15°	7.70
100	220	180	8-18	150	24	10	19	13	15°	9.40
125	250	210	8-18	165	26	12	19	13	15°	12.70
150	285	240	8-22	180	26	12	20	14	15°	15.80
200	340	295	12-22	210	30	16	25	22	15°	20.00
250	405	355	12-26	230	32	16	25	22	15°	29.22
300	460	410	12-26	245	32	16	25	22	15°	32.80