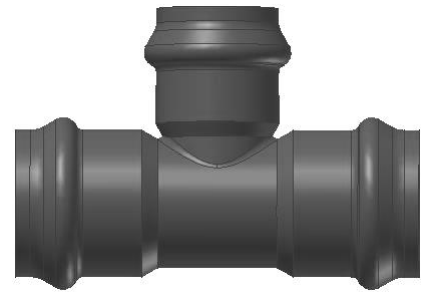


# Pipe Fittings

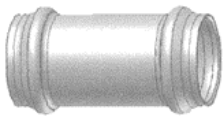
## Socketed – Cast SG Iron

Manufactured To SANS 52842

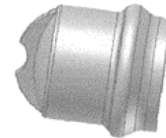
- Lightweight
- Can handle high pressures/stress
- Spheroidal Graphite (SG) Iron Fitting For PVC Pipe
- Coating Options:
  - Bitumen Dipped
  - Fusion Bonded Epoxy (FBE)
  - Nylon 11 (Rilsan)
- Wall Thickness In Accordance With DIN16451 PT1
- Seals Perfectly At Low and High Pressures
- Rated 25 Bar Pressure and, tested 40 Bar Pressure



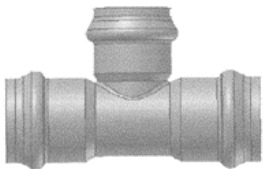
Unequal Tee



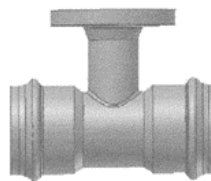
Straight Connector  
(Repair Coupling)



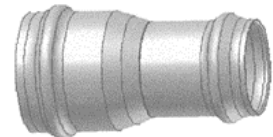
End Cap



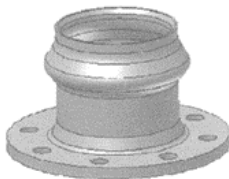
Equal Tee



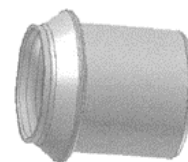
Scour Tee



Socketed Reducer



Flange Adaptor



Reducing Bush