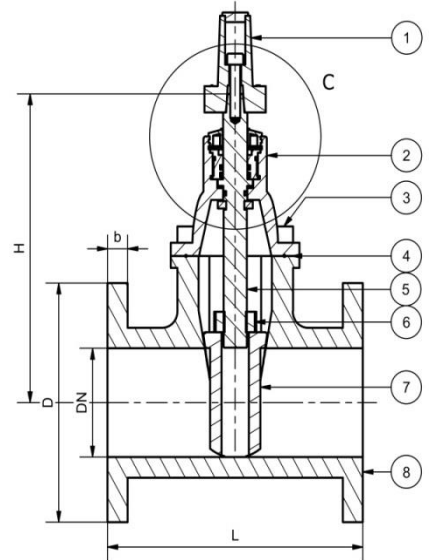


# Resilient Seal Gate Valve Flanged PN16 – SANS 664

- 664 Non Rising Spindle
- 664 Rising Spindle on request
- Fusion Bonded Epoxy Powder coated / Epoxy Coated
- Gate SG Iron EPDM encapsulated
- NBR Encapsulated Gate on Request
- Drilled to BS4504; SANS1123 or blank as required
- Right hand or Left hand closing
- Cap top, hand wheel or gearbox operated
- PN25, Refer to PN25 data sheet



Material List		
Item	Part Name	Material
1	Cap Top	SG Iron - Grd 420/12
2	Bonnet	SG Iron - Grd 420/12
3	Cap Screws	HT Steel Grd 8.8 / SS - Grd 304
4	Bonnet Gasket	O Ring Type - Protects bolts against corrosion
5	Spindle	Stainless Steel - Grd 410 / 304
6	Gate Nut	Brass
7	Gate	SG Iron EPDM / NBR Totally Encapsulated
8	Body	SG Iron - Grd 420/12
9	Circlip	Stainless Steel - Grd 410
10	O-Ring	Nitrile Rubber - NBR
11	Seal	Nylon
12	Bolt	SS - Grd 304/316 / HT Steel Grd 8.8
13	Dust Wiper Seal	Nitrile Rubber - NBR
14	Gland Housing	Brass
15	Washer	Brass
16	Coating	FBE 250 Micron Min. (Signal Blue)



Dimensions					
DN	PN16 - L	D	H	Min - b	Mass (kg)
50	216	165	210	19	12
80	229	200	260	19	17
100	254	220	290	19	21
150	280	285	380	20	36
200	317	340	445	20	56
250	356	405	555	22	90
300	380	460	620	25	119
350	470	520	760	27	193
400	470	580	840	28	246
450	485	640	1080	30	328
500	510	715	1228	32	414
600 (665 F/F)	508	840	1410	36	617

